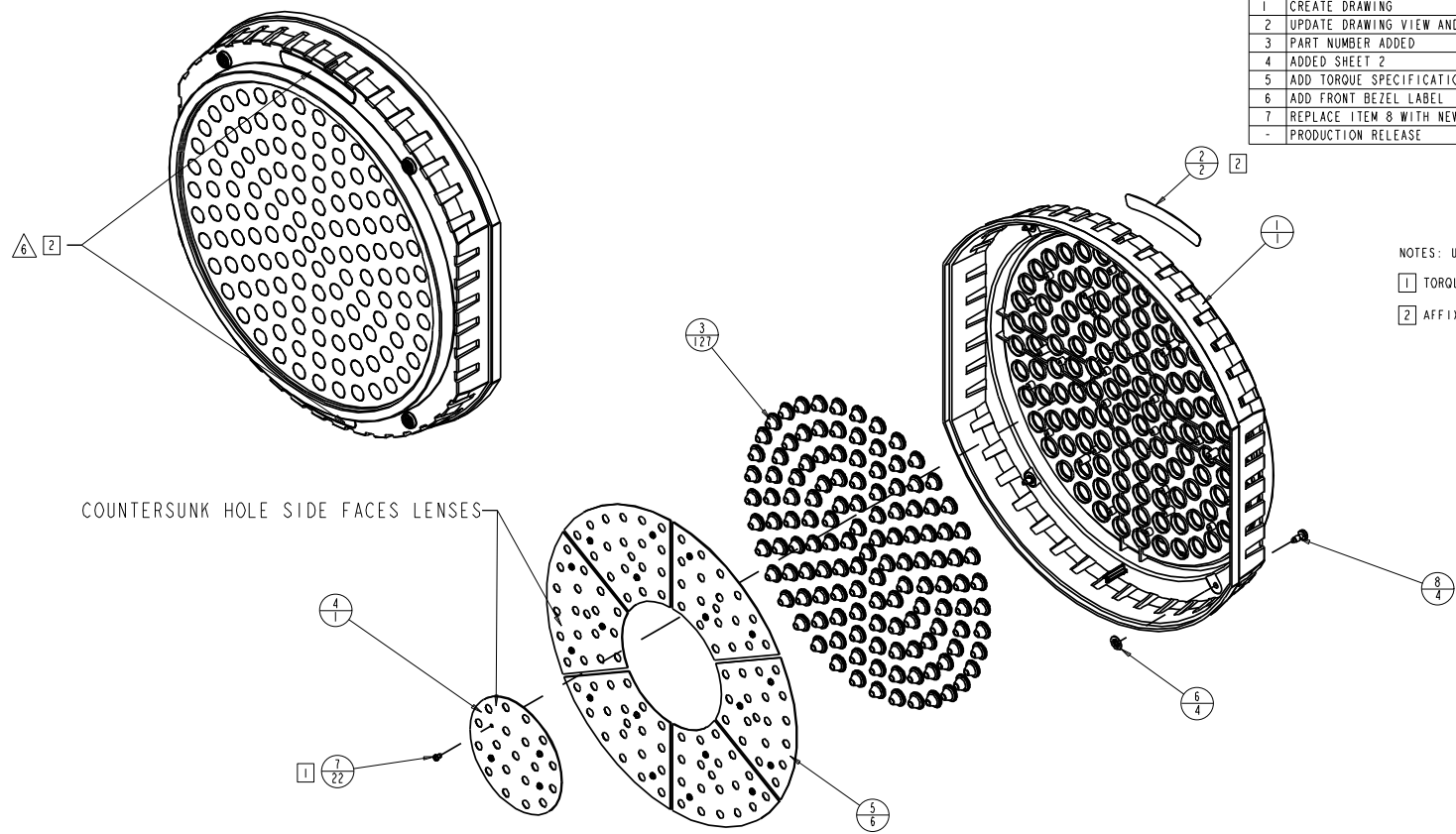


TZA032

REV.	DESCRIPTION	DATE	ENG	ECO #	APPR
1	CREATE DRAWING	19OCT07	MB		
2	UPDATE DRAWING VIEW AND BOM BALLOONS	14DEC07	PP		
3	PART NUMBER ADDED	25FEB08	PP		MB
4	ADDED SHEET 2	10MAR08	MB		
5	ADD TORQUE SPECIFICATION TO ITEM 6	10MAR08	PP		MB
6	ADD FRONT BEZEL LABEL	12MAR08	PP		MB
7	REPLACE ITEM 8 WITH NEW SOUTHCO FASTENER (BLACK)	31MAR08	PP		MB
-	PRODUCTION RELEASE	03APR08	PP		MB



NOTES: UNLESS OTHERWISE SPECIFIED.
 1 TORQUE TO 7in lbs, 22 PLACES.
 2 AFFIX LABEL IN RECESSED AREA OF BEZEL AS SHOWN. 2 PLACES.

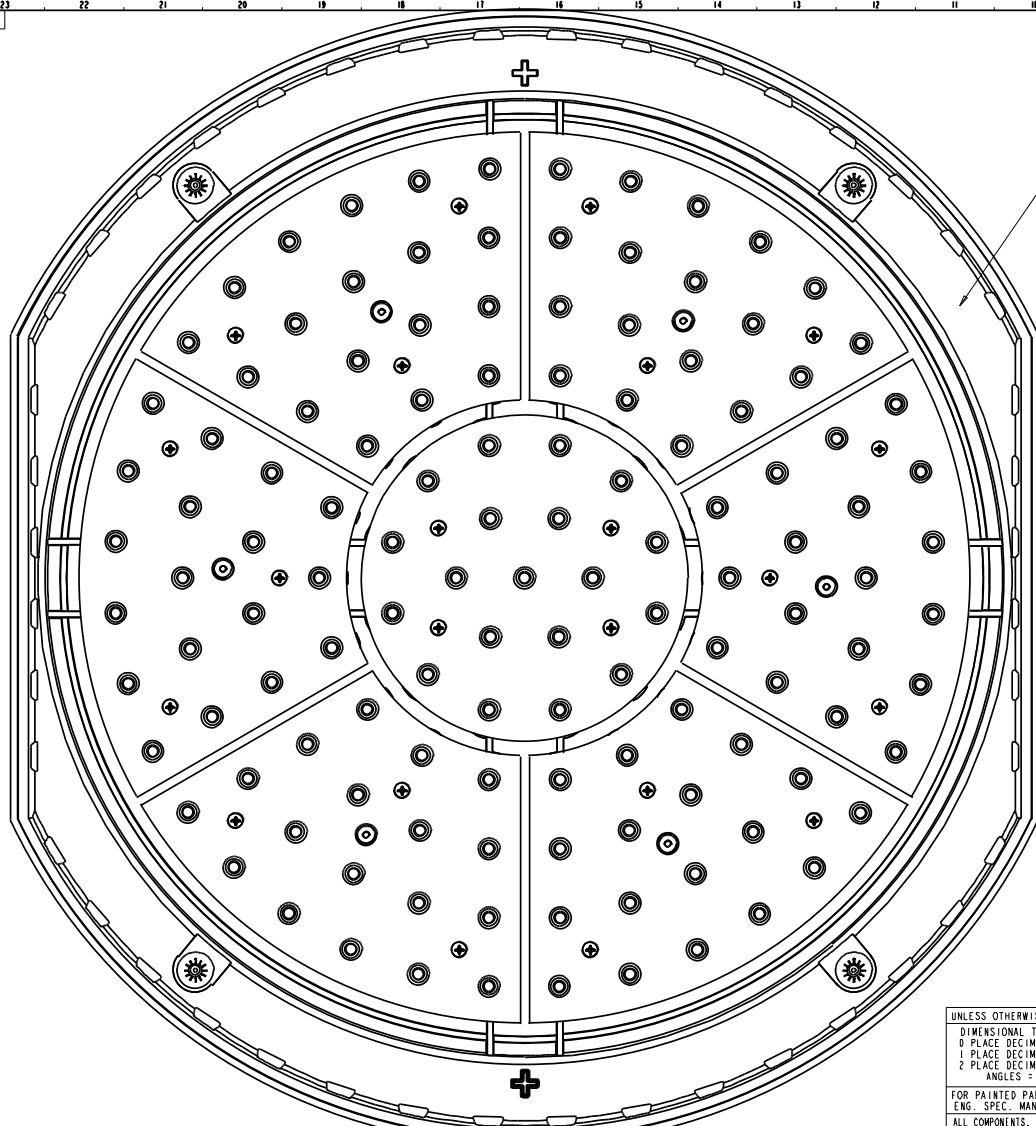
COUNTERSUNK HOLE SIDE FACES LENSES

ITEM NO.	QTY.	FILENAME	PART NO.	REV	DESCRIPTION
8	4	SCREW_CAPTURED_SOUTHCO_BLACK	90712011	-	SCREW_CAPTURED PHIL .23 OD X .611 LG CR 12-99-1011-05, BLACK
7	22	SCREW6-19PPB0250BZ	90709123	-	SCREW, PHIL PAN PLASTITE 6-19 X 1/4 BZ
6	4	RETAINER_CAPTURED_SS	90701362	-	RETAINER_CAPTURED_SS_MED
5	6	TZ107	90701387	A	RETAINER, LENS, RADIAL ARRAY, MEA4
4	1	TZ106	90701386	A	RETAINER, LENS, CENTER ARRAY
3	127	TW541	99090077EF	-	LENS, PRO LIGHT, LED, 45 DEGREE DIFFUSION
2	2	TZ457	99310494	-	LABEL, FRONT BEZEL, MEA4
1	1	TZ201	99350099	-	BEZEL, FRONT A4

BILL OF MATERIALS

UNLESS OTHERWISE SPECIFIED: DIMENSIONAL TOLERANCES: 0 PLACE DECIMAL = ±0.38 1 PLACE DECIMAL = ±0.25 2 PLACE DECIMALS = ±0.13 ANGLES = ±0.5°	RELEASE DATE: ENG: MIKE BELL MEG: MFG: DRW: PETE PHILLIPS	CE: QA: MFG: DRW:	High End 2105 GRACY FARMS LANE AUSTIN, TEXAS 78758 (512) 836-2242 FAX (512) 832-4128 http://www.highend.com	Lightwave Research
FOR PAINTED PARTS REFER TO ENG. SPEC. MANUAL WI-0592 ALL COMPONENTS, MATERIALS AND FINISHES TO BE RoHS COMPLIANT	DESCRIPTION: ASSEMBLY, FRONT BEZEL, MEA4	MATERIAL: TBD	FINISH:	
MIN. DRIFT MIN. RADI FLATNESS THICKNESS VOLUME	INTERPRET DIMENSIONS PER ASME Y14.5M-1994 THIRD ANGLE PROJECTION DIMENSIONS ARE IN MILLIMETERS	SI METRIC A1	PART NO. 80450095	DRAWING NO. TZA032
			DO NOT SCALE	SCALE: 0.250
				SHEET: 1 OF 2

PROPRIETARY NOTICE:
 THIS DOCUMENT CONTAINS CONFIDENTIAL AND PROPRIETARY INFORMATION OF HIGH END SYSTEMS INC., (ALSO DBA LIGHTWAVE RESEARCH) AND IS GIVEN TO THE RECEIVER IN CONFIDENCE. THE RECEIVER ACCEPTS AND AGREES THAT, EXCEPT AS AUTHORIZED BY HIGH END SYSTEMS, THE RECEIVER WILL NOT PERMIT THE USE OF THE DOCUMENT OR ANY COPY THEREOF OR THE INFORMATION THEREIN, WILL NOT COPY OR PERMIT COPYING THE DOCUMENT WILL NOT DISCLOSE TO OTHERS EITHER THE DOCUMENT OR THE INFORMATION THEREIN, AND WILL UPON COMPLETION OF THE NEED TO RETAIN THE DOCUMENT, OR UPON DEMAND, RETURN THE DOCUMENT WITHOUT RETAINING ANY OF THE INFORMATION CONTAINED THEREIN IN ANY FORM WHATSOEVER.



FRONT BEZEL IS SYMMETRIC ABOUT HORIZONTAL CENTERLINE,
NO NEED TO IDENTIFY TOP AND BOTTOM

PROPRIETARY NOTICE:
THIS DOCUMENT CONTAINS CONFIDENTIAL AND PROPRIETARY INFORMATION OF HIGH END SYSTEMS INC., (ALSO DBA LIGHTWAVE RESEARCH) AND IS GIVEN TO THE RECEIVER IN CONFIDENCE. THE RECEIVER ACCEPTS AND AGREES THAT, EXCEPT AS AUTHORIZED BY HIGH END SYSTEMS, THE RECEIVER WILL NOT PERMIT THE USE OF THE DOCUMENT OR ANY COPY THEREOF OR THE INFORMATION THEREIN, WILL NOT COPY OR PERMIT COPYING THE DOCUMENT, WILL NOT DISCLOSE TO OTHERS EITHER THE DOCUMENT OR THE INFORMATION THEREIN, AND WILL UPON COMPLETION OF THE NEED TO RETAIN THE DOCUMENT, OR UPON DEMAND, RETURN THE DOCUMENT WITHOUT RETAINING ANY OF THE INFORMATION CONTAINED THEREIN IN ANY FORM WHATSOEVER.

UNLESS OTHERWISE SPECIFIED		RELEASE DATE:	CE:	High End 2105 GRACY FARMS LANE AUSTIN, TEXAS 78758 (512) 836-2242 FAX (512) 832-4128 http://www.highend.com	LR LIGHTWAVE RESEARCH
DIMENSIONAL TOLERANCES: 0 PLACE DECIMAL = ±0.38 1 PLACE DECIMAL = ±0.25 2 PLACE DECIMALS = ±0.13 ANGLES = ±0.5°		ENG: MIKE BELL	QA:		
FOR PAINTED PARTS REFER TO ENG. SPEC. MANUAL WI-0592		ME:	DRW: PETE PHILLIPS	DESCRIPTION: ASSEMBLY, FRONT BEZEL, MEA4	
ALL COMPONENTS, MATERIALS AND FINISHES TO BE RoHS COMPLIANT		MATERIAL:		FINISH:	
MIN. DRAFT	INTERPRET DIMENSIONS PER ASME Y14.5M-1994 THIRD ANGLE PROJECTION DIMENSIONS ARE IN MILLIMETERS	SI METRIC A1		PART NO. 80450095	DRAWING NO. TZA032
VOLUME	DO NOT SCALE	SCALE: 0.250	SHEET: 2 OF 2		