

REVISION HISTORY

SCH REV	PCB REV	ECO NO.	DATE	COMMENT
- 1.2.1	- 1.2	-		
1.2.2	1.2	1010	6-17-02	BOARD FIRMWARE REV'D TO 1.3.4
1.3	1.3	1068	8-24-02	C42, C43 ADDED TO FAN CIRCUITS

NOTES:

UNLESS OTHERWISE SPECIFIED:

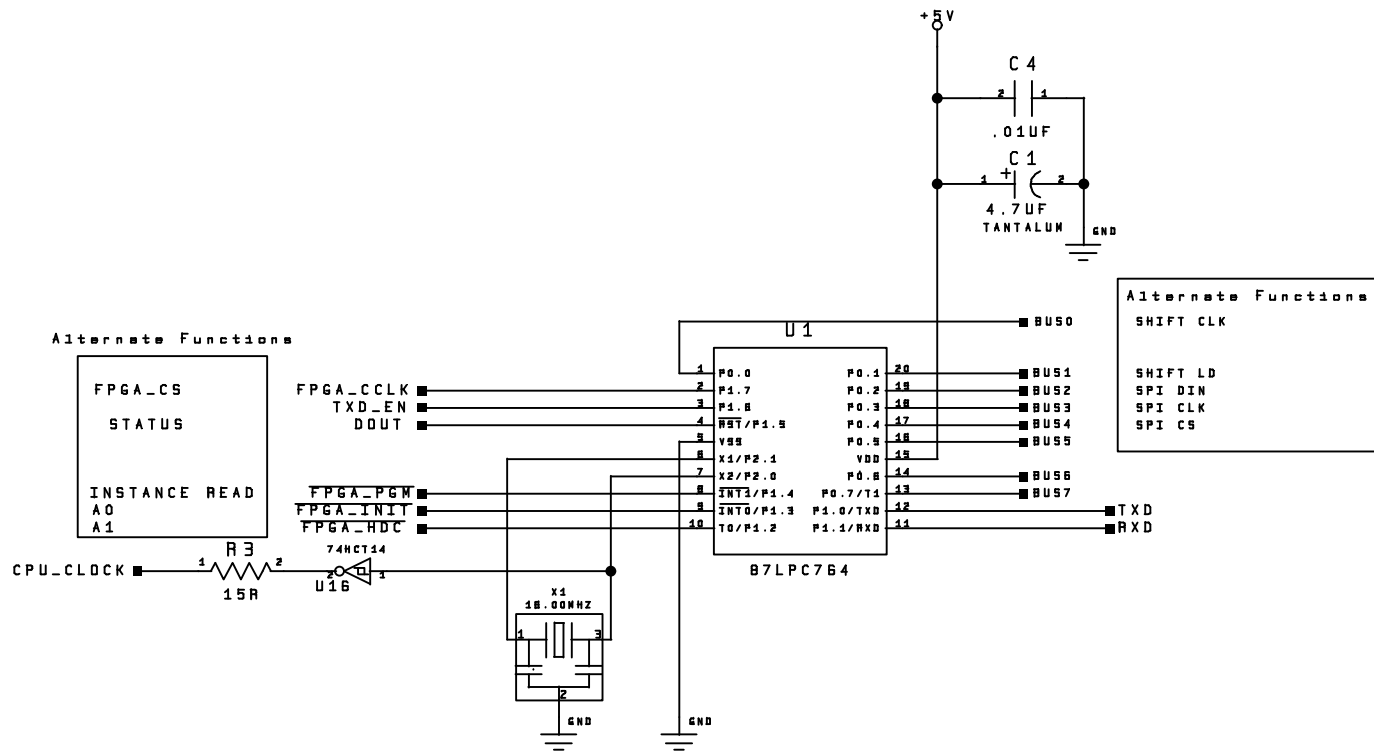
1. ALL RESISTOR VALUES ARE IN OHMS
2. ALL RESISTORS ARE 1/4 WATT 5% OR BETTER
3. CAPACITOR VALUES ARE IN PICO FARADS
4. ALL NON POLARIZED CAPACITORS ARE 50V OR BETTER
VALUES BELOW 470pF ARE NPO/COG TYPE 5%
VALUES 470pF TO 1000pF ARE X7R 10%
VALUES ABOVE 1000pF ARE Z5U +/- 20 %
5. ALL POLARIZED CAPACITORS ARE 20% OR BETTER


Copyright (c) 1994-2002 High End Systems, Inc. All rights reserved worldwide.

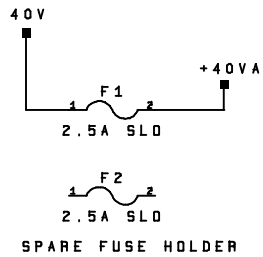
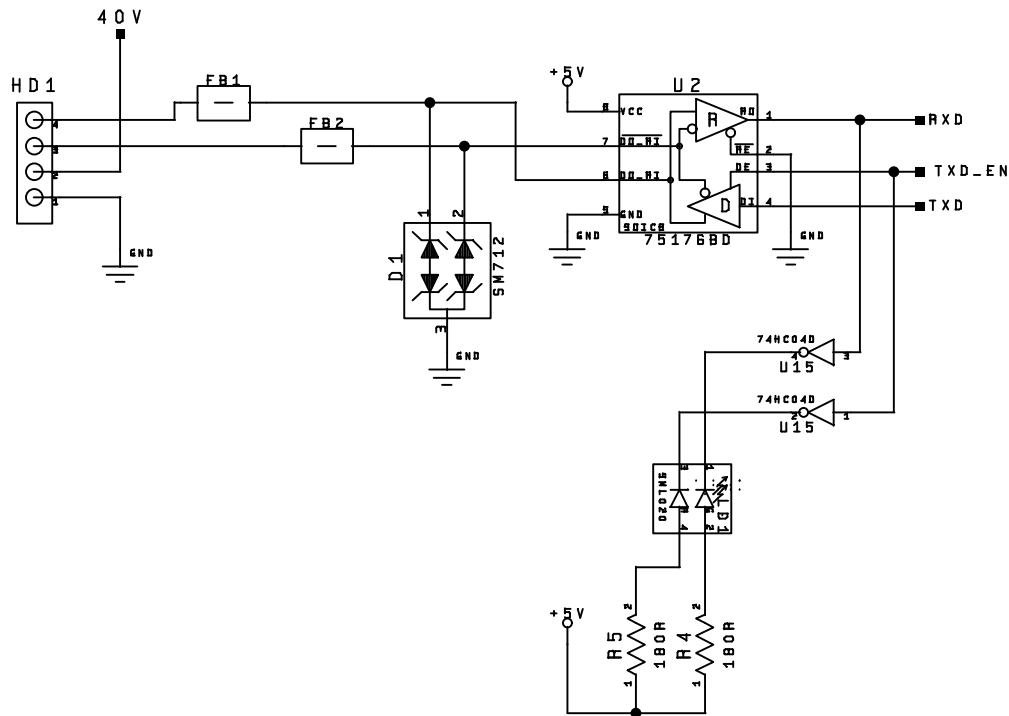
Lightwave Research, the Lightwave Research logo, High End Systems and the High End Systems logo are registered trademarks of High End Systems, Inc. Trademarks and trade names of others may be used in this document to refer to either such other entities or to their products. High End Systems Inc. disclaims any proprietary interest or connection to such marks or entities.

HIGH END SYSTEMS INC.			
Title:		MOTOR MODULE PAN TILT 6202	
Function:		121R13	
Drawing No.	REV.	Designed:	
SCH-99030121	1.3	Scott Ingham	
Drawn:		Approved:	
DRAWER			
9-9-2002_15.24	Size A2	Page 1	OF 9

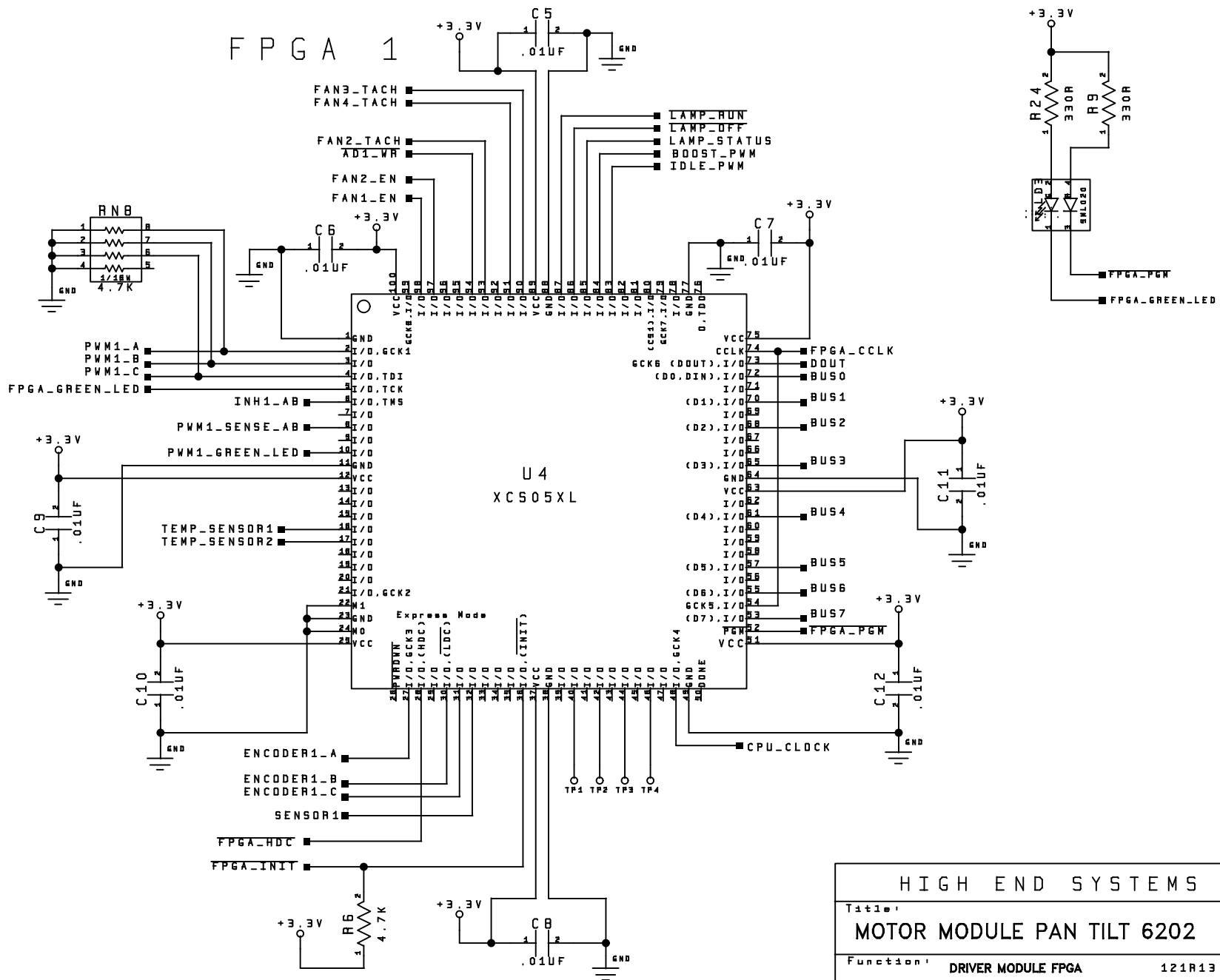




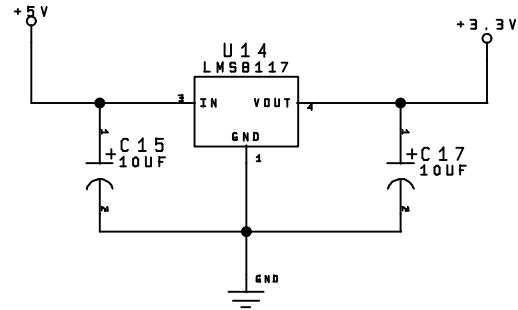
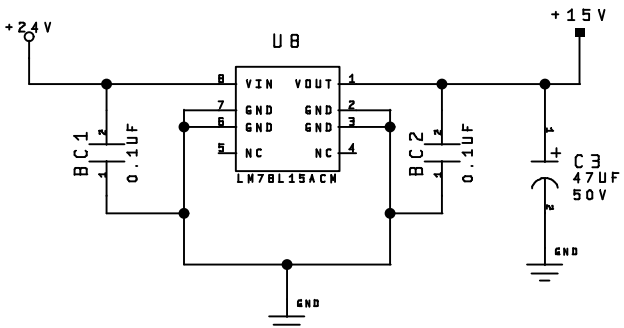
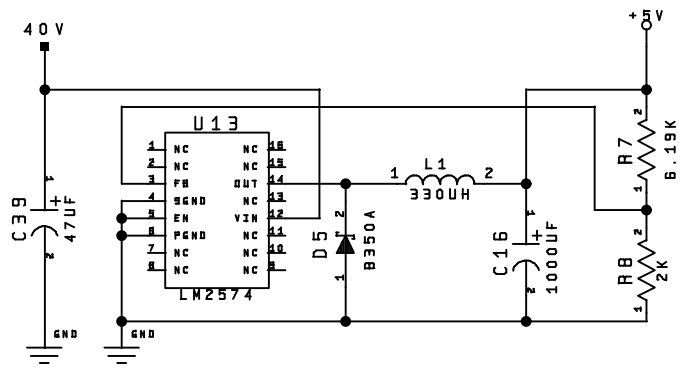
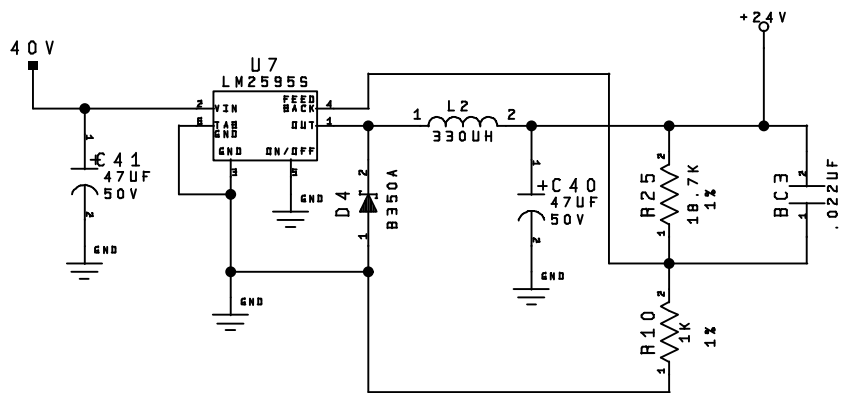
HIGH END SYSTEMS INC.			
Title:			
MOTOR MODULE PAN TILT 6202			
Function:		DRIVER MODULE CPU	121R13
Drawing No.	REV.	Size	8-24-2002_15.11
SCH-99030121	1.3	A2	Page 2 of 9



HIGH END SYSTEMS INC.			
Title:		MOTOR MODULE PAN TILT 6202	
Function:		DRIVER MODULE LINK	121R13
Drawing No.	REV.	Size	8-24-2002-15-11
SCH-99030121	1.3	A2	Page 3 of 9



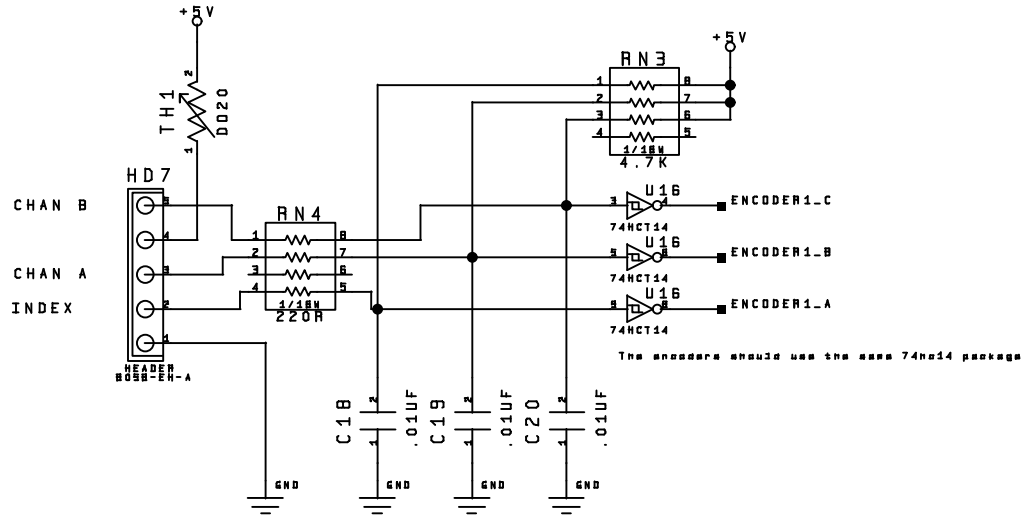
HIGH END SYSTEMS INC.			
Title:			
MOTOR MODULE PAN TILT 6202			
Function:		DRIVER MODULE FPGA	121R13
Drawing No.	REV.	B-24-2002_15_11	
SCH-99030121	1.3	Size A2	Page 4 of 9



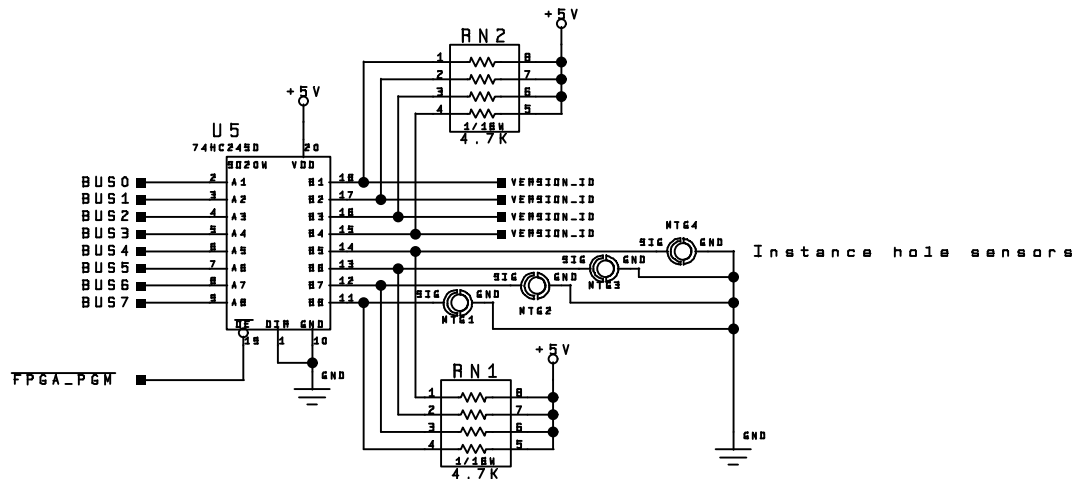
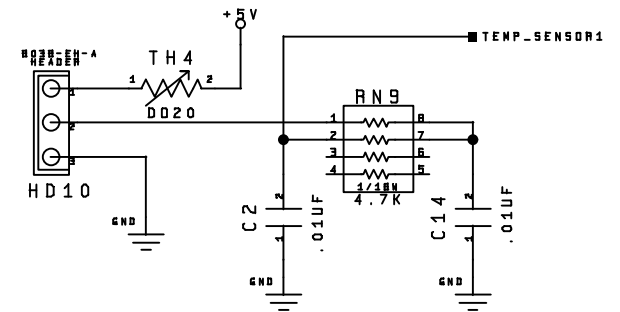
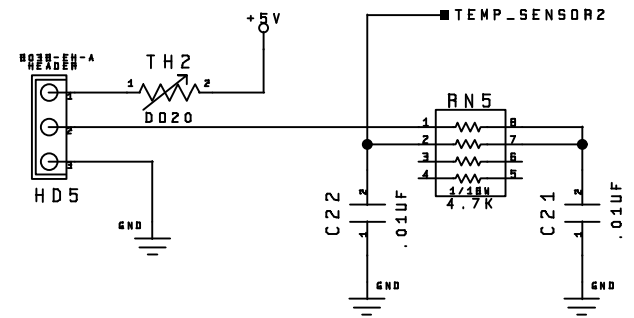
HIGH END SYSTEMS INC.			
Title:		MOTOR MODULE PAN TILT 6202	
Function:		DRIVER MODULE POWER	121R13
Drawing No.	REV.	Size	B-24-2002_15.11
SCH-99030121	1.3	A2	Page 5 of 9



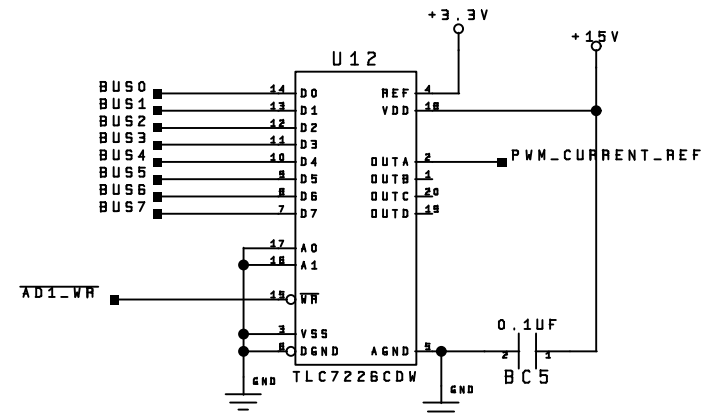
PINNED FOR USDIGITAL E2



The encoders should use the same 74hc14 package

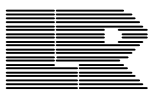


This transceiver is read before the FPGA is programmed



HIGH END SYSTEMS INC.

Title: MOTOR MODULE PAN TILT 6202



Function: DRIVER MODULE INTERFACE 121R13

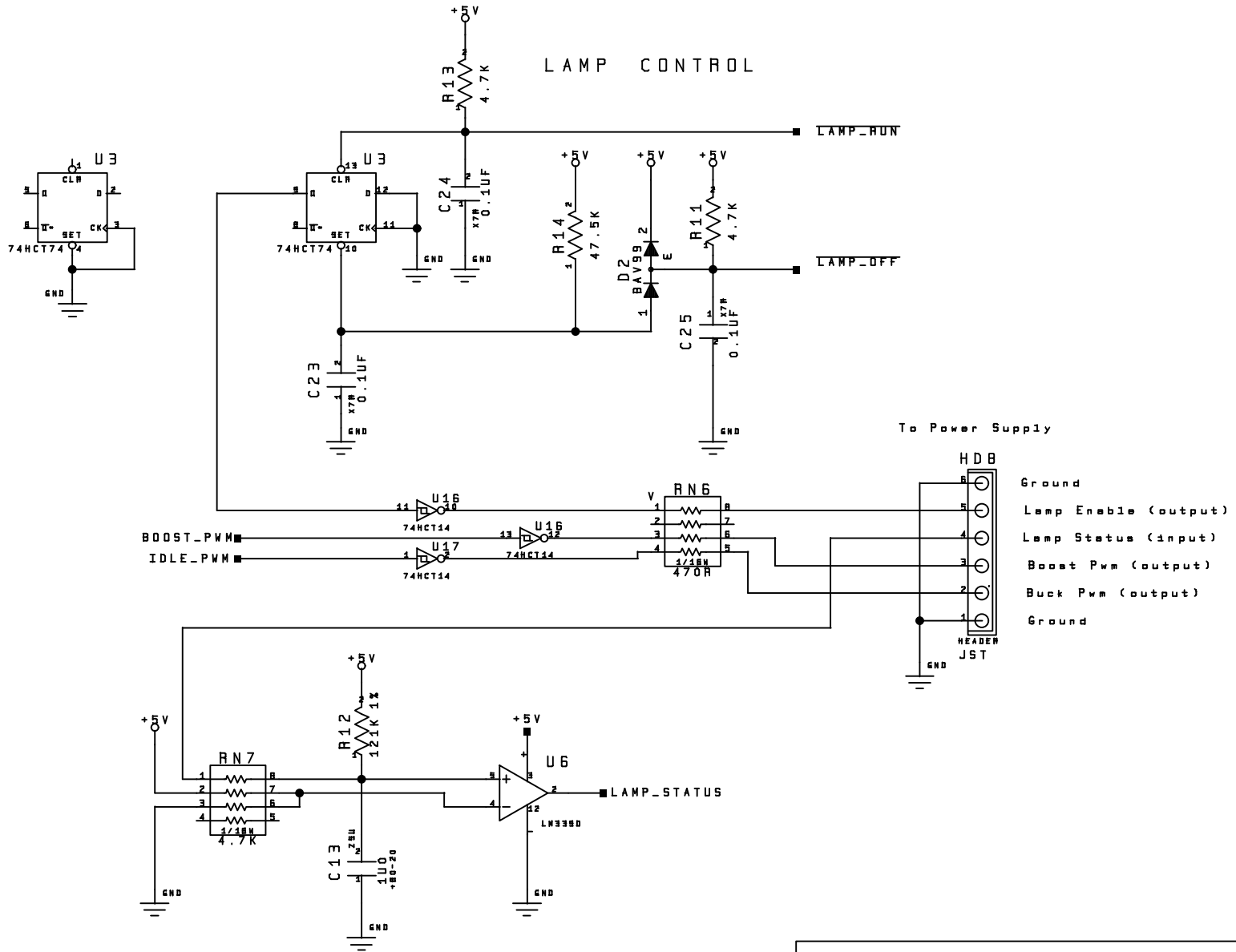
Drawing No. SCH-99030121

REV. 1.3

Size A2

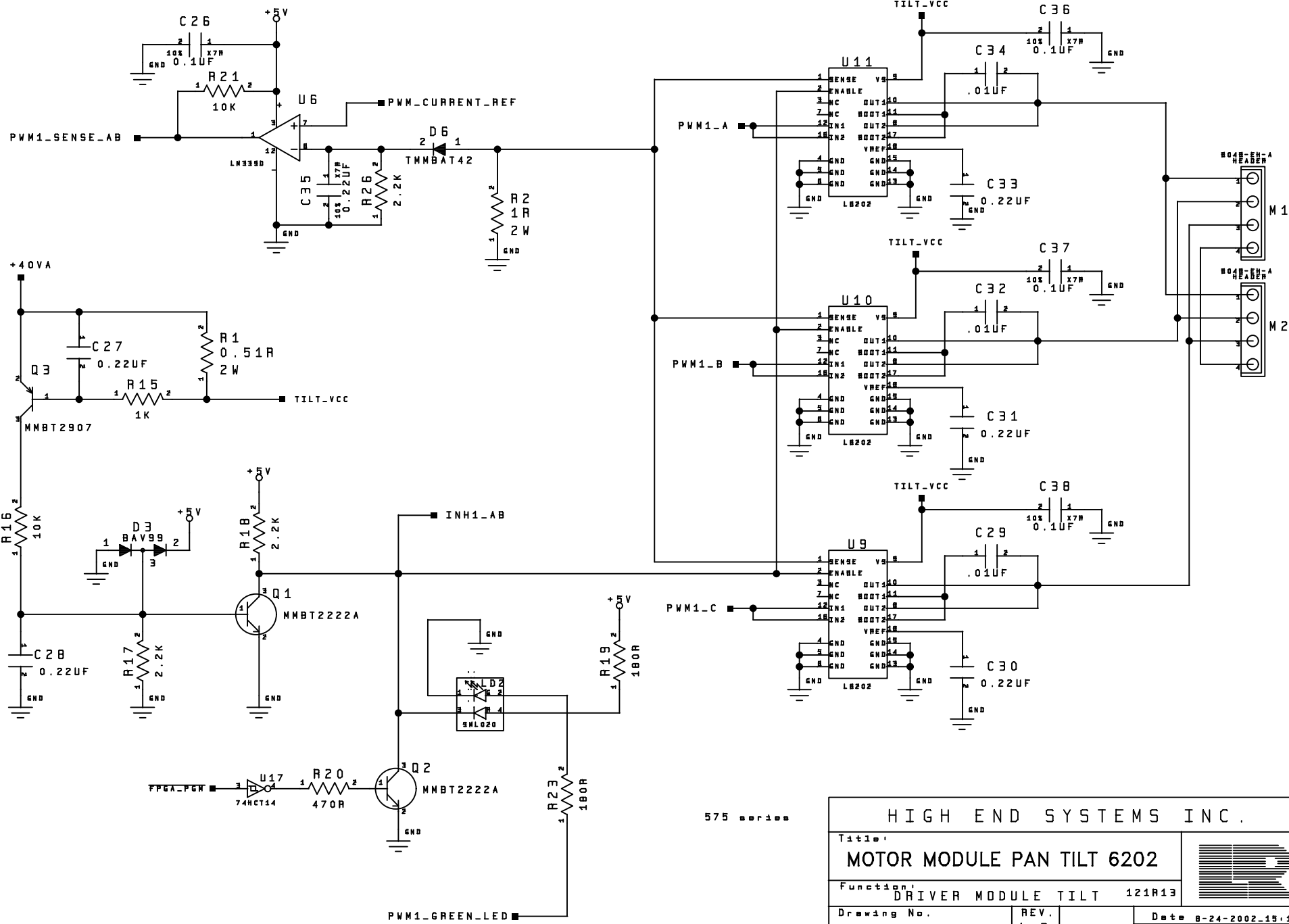
B-24-2002_15_11

Page 6 of 9



HIGH END SYSTEMS INC.			
Title:		MOTOR MODULE PAN TILT 6202	
Function:		LAMP CONTROL	121R13
Drawing No.	REV.	Size	B-24-2002_15_11
SCH-99030121	1.3	A2	Page 7 of 9



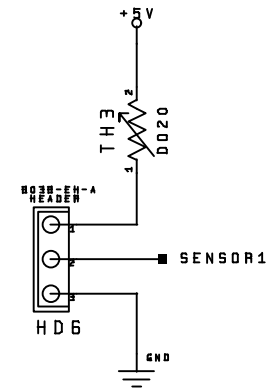
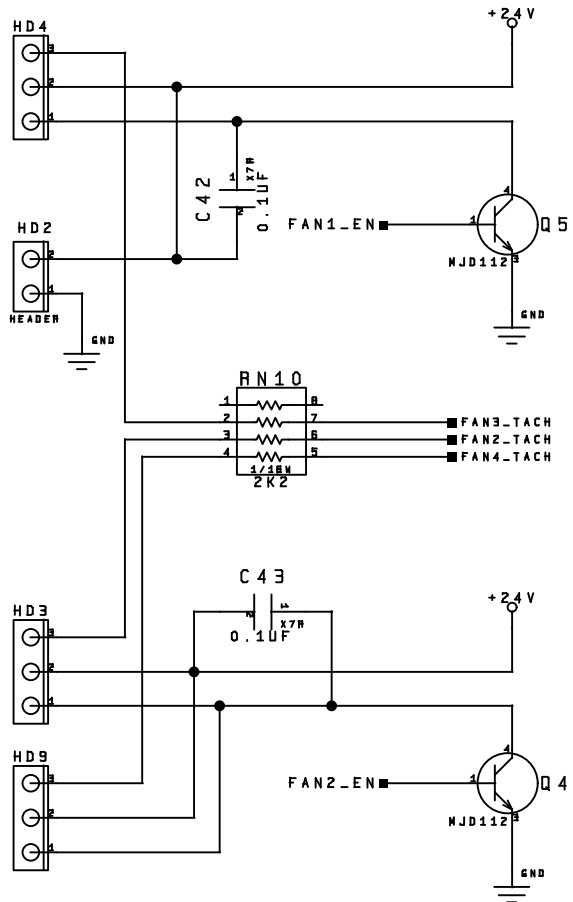


575 series

HIGH END SYSTEMS INC.			
Title:		MOTOR MODULE PAN TILT 6202	
Function:		DRIVER MODULE TILT 121R13	
Drawing No.	REV.	Size	Date
SCH-99030121	1.3	A2	8-24-2002.15.11
			Page 8 of 9



FAN CIRCUIT



HIGH END SYSTEMS INC.			
Title:		MOTOR MODULE PAN TILT 6202	
Function:		MOTOR DRIVER FAN/TEMP 121R13	
Drawing No.	REV.	Size	8-24-2002_15.11
SCH-99030121	1.3	A2	Page 9 of 9