

REVISION HISTORY

SCH REV	PCB REV	ECO NO.	DATE	COMMENT
1.0	1.0	-		INITAIL
1.0.1	1.0	8478	4/30/99	ADDED BC3
1.1	1.1		7/27/99	CHANGED PCB TO ADD BC3 AND FIX VR1 NETS
1.1.1	1.1.1	1424	05-25-05	ASSEMBLY DRAWING CHANGE ONLY, NO ARTWORK CHANGE

NOTES :

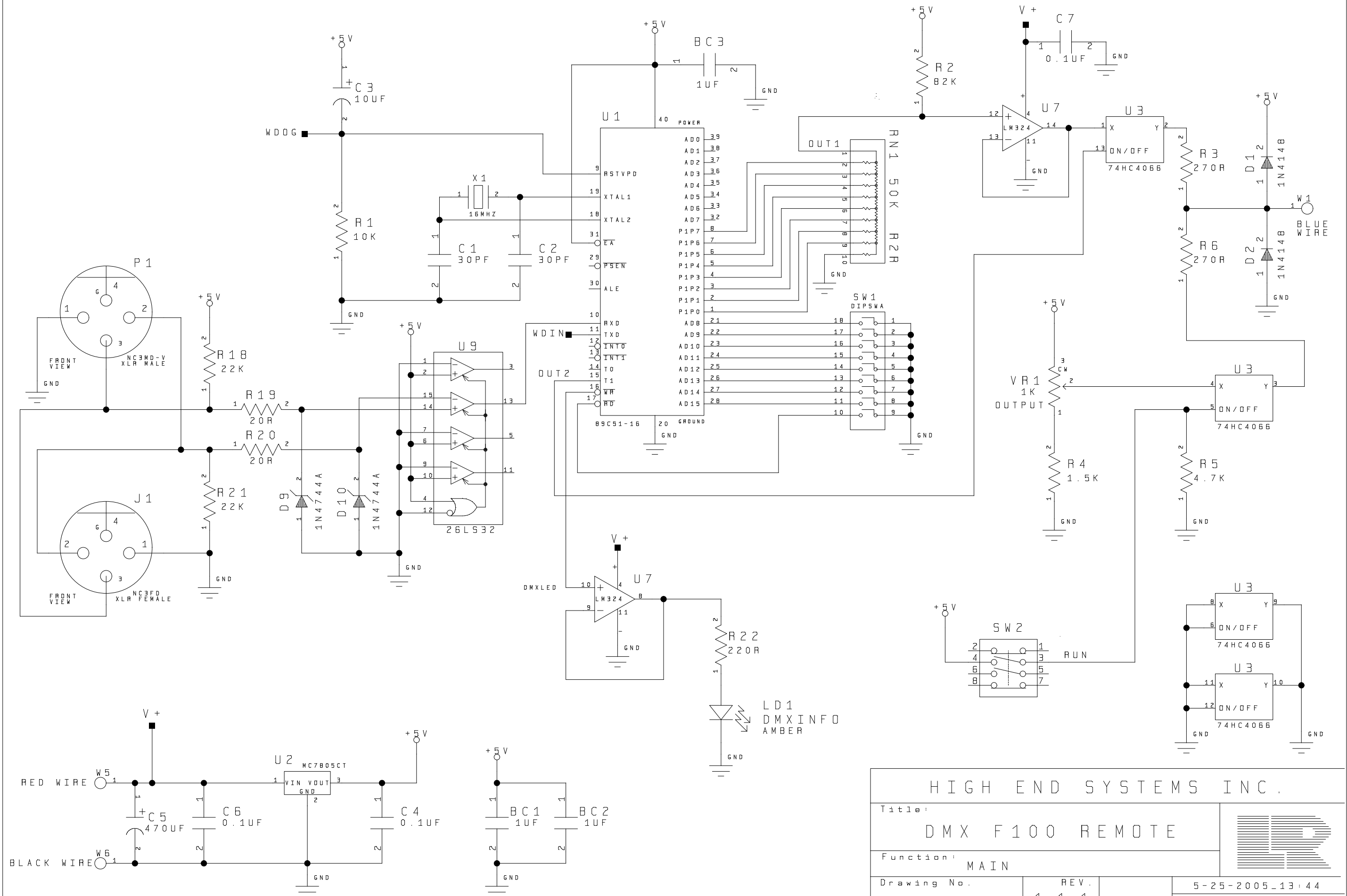
UNLESS OTHERWISE SPECIFIED :

1. ALL RESISTOR VALUES ARE IN OHMS
2. ALL RESISTORS ARE 1/4 WATT 5% OR BETTER
3. CAPACITORS VALUES ARE IN PICO FARADS
4. ALL NON POLARIZED CAPACITORS ARE 50V OR BETTER
VALUES BELOW 470 μ F ARE NPO/COG TYPE 5%
VALUES 470 μ F TO 1000 μ F ARE X7R 10%
VALUES ABOVE 1000 μ F ARE Z5U +/- 20 %
5. ALL POLARIZED CAPACITORS ARE 20% OR BETTER

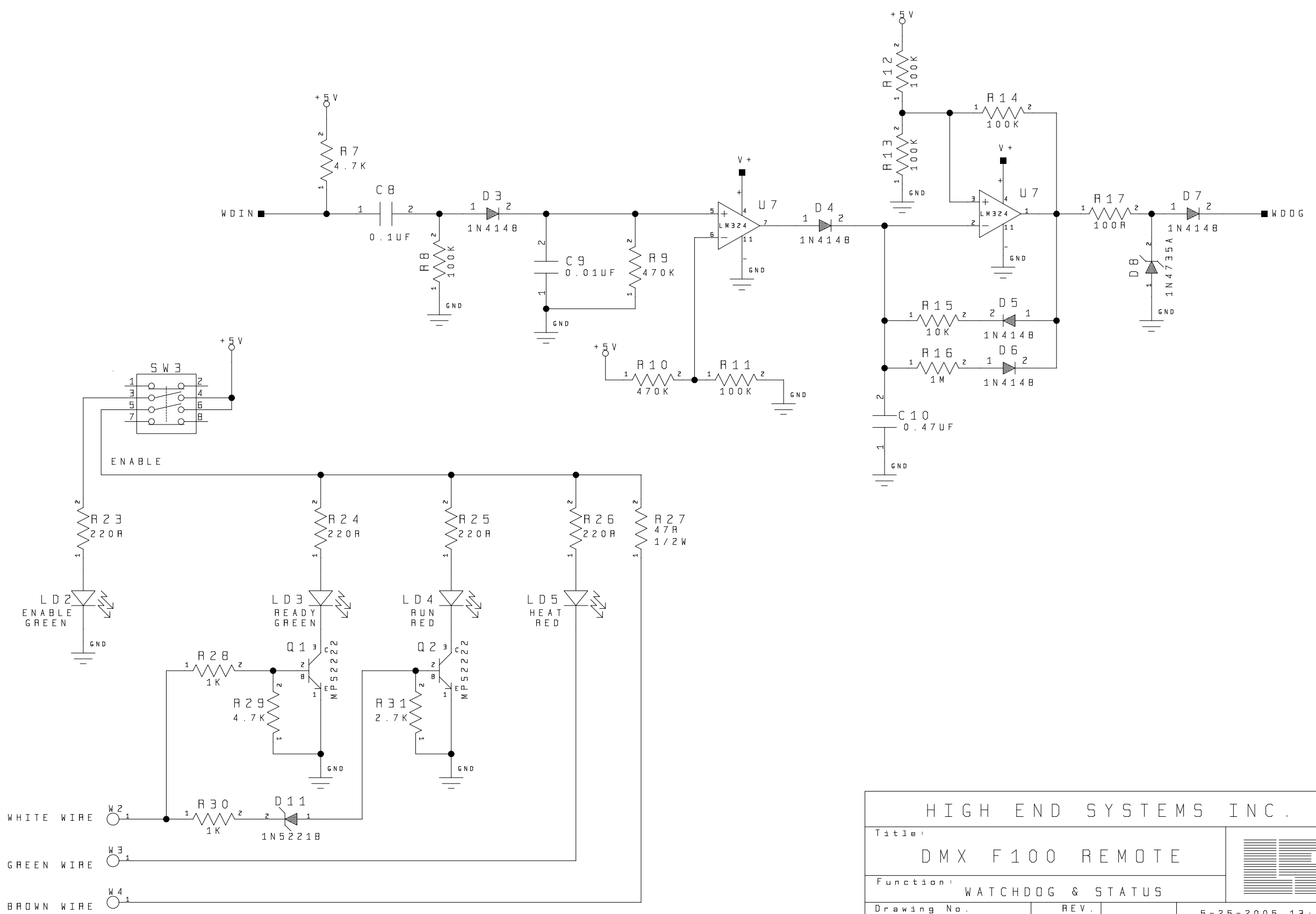
Copyright (c) 1994-1999 High End Systems, Inc. All rights reserved worldwide.

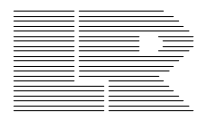
F100, Lightwave Research, the Lightwave Research logo, High End Systems and the High End Systems logo are registered trademarks of High End Systems, Inc. Trademarks and trade names of others may be used in this document to refer to either such other entities or to their products. High End Systems Inc. disclaims any proprietary interest or connection to such marks or entities.

HIGH END SYSTEMS INC.			
Title:		DMX F100 REMOTE	
Function:		COVER SHEET	
Drawing No.	REV.	Designed:	
SCH-99030054	1.1.1	TREVOR JACOBS	
Drawn:		Approved:	
MYERS			
5-25-2005_13:50	Size A2	Page	1 of 3



HIGH END SYSTEMS INC.			
Title:		DMX F100 REMOTE	
Function:		MAIN	
Drawing No.	REV.	Size	5-25-2005_13:44
SCH-99030054	1.1.1	A2	Page 2 of 3



HIGH END SYSTEMS INC.			
Title:			
DMX F100 REMOTE			
Function:		WATCHDOG & STATUS	
Drawing No.	REV.	5-25-2005_13.44	
SCH-99030054	1.1.1	Size A2	Page 3 of 3