

MECHANICAL SPECIFICATIONS

DIMENSIONS

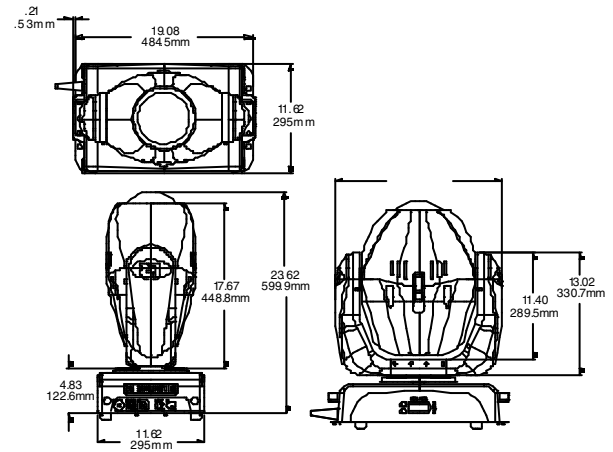
FIXTURE		BOXED FOR SHIPPING	
in:	11.6 x 19.1 x 23.6	in:	19 x 26 x 31
mm:	295.1 x 484.5 x 599.9	mm:	480 x 657 x 784
Weight:	22.4 kg (49 lb)	Weight:	29 kg (63 lb)

Mounting Information

Studio Beam may be mounted by attaching suitable clamps with locking washers through the center holes on the base of the fixture. Cheeseborough truss clamps and 1/2" nut/bolt sets may be purchased separately. Studio Beam can also be stood on its rubber feet on a sturdy, stable surface.

Colors Available: Black

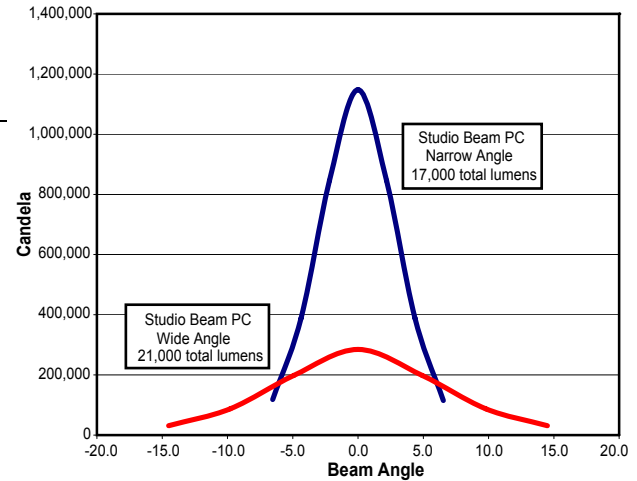
Turning Radius: 18 in (457 mm)



ELECTRICAL SPECIFICATIONS / LIGHT SOURCE

Lamp	MSR 700W short arc
Power Consumption	100V 50HZ @ 10A 230V 50HZ @ 4.35A 100V 60HZ @ 10A 230V 60HZ @ 4.35A
Rated Power	800W max
Power Factor	100V, 60HZ: 0.98 230V, 50HZ: 0.98
Light Output	20,000+ ANSI lumens
Lamp Life	400 hours
Color Temperature	6000K

	Center Beam Candela	Beam Angle Degrees	Field Angle Degrees
	117,000	8	15
Throw	Center Beam	Beam Diameter	Field Diameter
5	46,800	0.7	1.3
10	11,700	1.4	2.6
15	5,200	2.1	3.9
20	2,925	2.8	5.3
25	1,872	3.5	6.6
30	1,300	4.2	7.9
35	955	4.9	9.2
40	731	5.6	10.5
45	578	6.3	11.8
50	468	7.0	13.2
55	325	7.7	14.5
60	330	8.4	15.8
65	277	9.1	17.1
70	239	9.8	18.4
75	208	10.5	19.7
80	183	11.2	21.1
85	162	11.9	22.4
90	144	12.6	23.7
95	130	13.3	25.0
100	117	14.0	26.3



For Metric figures, read "Center Beam" values as in lux, and the throw and diameters will be in meters.
For US figures, read "Center Beam" values as in footcandles, and the throw and diameters will be in feet.

$$\text{Illuminance} = \frac{\text{Candela}}{\text{Distance}^2}$$

OPERATION

Pan: 540°	Tilt: 256°	Control Options: DMX-512, On Board Programming/Playback, Time Code Sync, Internal Effects, Fixture Talkback
Zoom: Yes	Field Angle: 15° - 30°	Address Method: LED Display, Fixture Talkback

Software Upgrades Operating software may be downloaded from the High End Systems web site (www.highend.com), and uploaded using a High End Systems dongle.

Compliances Studio Beam is CE, CETL, and ETL compliant.

DMX data connectors 3-pin or 5-pin male and female XLR connectors

Environmental Tolerances	Maximum ambient temperature: 50°C (122° F)	Maximum exterior surface temperature: 90°C (194°F)
	Minimum distance to flammable objects: 3.28 ft (1.0m)	Minimum distance to lighted object: 6.56 ft (2.0m)

PART NUMBERS

Fixtures
50010001 - Studio Beam High Intensity Luminaire

Lamps
55030054 - Studio Beam Replacement Lamp, Philips MSR-700SA (Short Arc)

Flight Cases
50070002 - Road Case, Studio Beam, Dual Fixture Standard
50070003 - Road Case, Studio Beam, Dual Fixture Pro

DMX CHANNELS

Channel	Function	Channel	Function
1	Pan Coarse	9	Beam Shaping
2	Pan Fine	10	Zoom
3	Tilt Coarse	11	Frost
4	Tilt Fine	12	Shutter
5	Color Function	13	Dim
6	Cyan	14	Motor Speed
7	Magenta	15	Macro/LAD
8	Yellow	16	Control

DMX Channels: 16 **Fixtures per Universe:** 36
Internal Preset Scene Memory: 2 Banks, 16 Scenes per Bank

COLOR WHEEL



Studio Beam features CMY subtractive color mixing.

Each color mixing wheel includes an additional fixed color:

Cyan Color Wheel includes:

1. Cyan color mixing portion
2. Deep Red

Magenta Color Wheel includes:

1. Magenta color mixing portion
2. CTO

Yellow Color Wheel includes:

1. Yellow color mixing portion
2. Deep Blue